



**Forged Check Valves**  
**Fig. R800 Class 800**  
**Size ½" – 2" (DN 15 – 50)**



# **FIG. R800**

# **CHECK VALVE**

**BS5352, MSS SP 118 & ASME B16.34**

**Connections according to:**

**ANSI B 1.20.1 (NPT)**

**ANSI B 16.11 (SW)**

**CE**

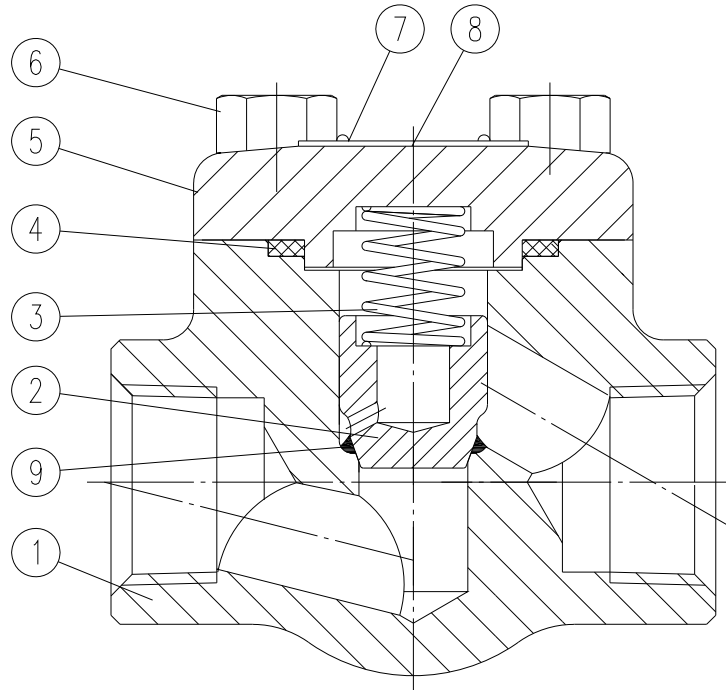


# Forged Check Valves

## Fig. R800 Class 800

### Parts and Materials

**Parts and materials**



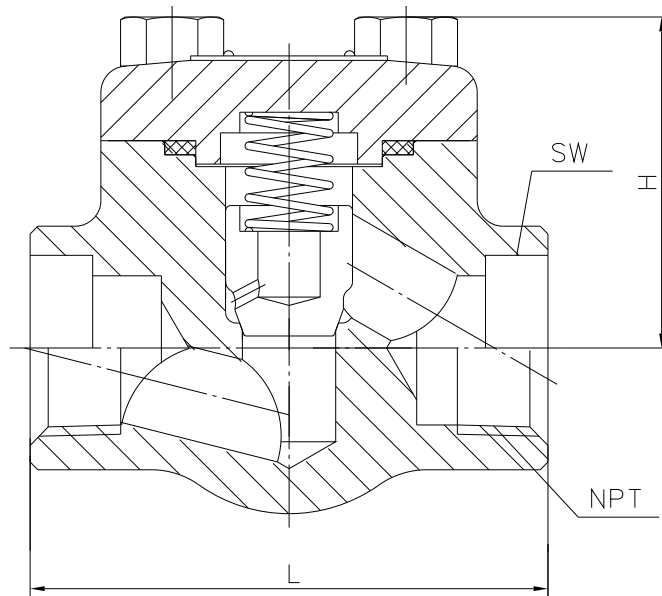
Item	Description	Material	
		Carbon Steel	Stainless Steel
1	Body	A 105	A 182 F316L
2	Piston disc	A 276 420	A 182 F316L
3	Spring	17-4 PH	
4	Gasket	AISI 304 + Graphite	AISI 316 + Graphite
5	Bonnet	A 105	A 182 F316L
6	Bolt	A 193 B7	A 193 B8M
7	Ribet	A 182 F304	A 182 F316
8	Nameplate	Aluminium	
9	Seat	A 105 + STL	A 182 F316L + STL



# Forged Check Valves

## Fig. R800 Class 800

### Dimensions



#### Dimensions

SIZE	L	NPT	H	Weight
½" (DN 15)	79	½"	51	1,6
¾" (DN 20)	92	¾"	55	1,8
1" (DN 25)	110	1"	68	3,2
1¼" (DN 32)	152	1¼"	97	5,1
1½" (DN 40)	152	1½"	97	6,2
2" (DN 50)	172	2"	103	10,2

(\*) Dimensions in mm and weight in kg.

#### Note:

Dimensions not subject to International Standards can vary in  $\pm 10\%$ . ICP reserves the right to change those dimensions without notice, due to they do not affect integrity and performance of the valves.

ICP VALVES S.A.  
E-Mail: sales@ icp-valves.com  
Internet: www.icp-valves.com

Authorized Distributor



# Forged Check Valves

## Fig. R800 Class 800

### General Characteristics, KV, P&T Rating

GENERAL CHARACTERISTICS	Forged Check Valve	Fig. R800	
<b>DESIGN STANDARDS</b>			
Valves design	BS 5352	MSS SP 118	ASME B 16.34
Connections	ANSI B 1.20.1	ANSI B 16.11	
Face to face dimensions	Manufacturer's standard		
<b>TESTS AND CERTIFICATES</b>	API 598		
Quality Assurance	ISO 9001		
Pressure testing	EN 12266-1		
Marking	EN 19		

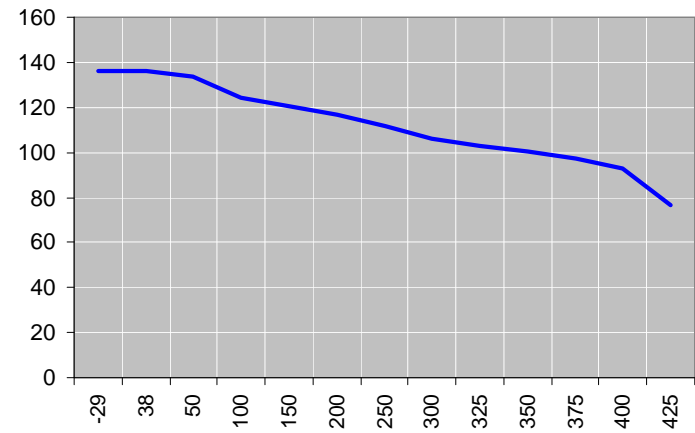
#### Kv Values in m3/h

VALVE SIZE	Kv	VALVE SIZE	Kv
½" (DN 15)	1,9	1¼" (DN 32)	11,7
¾" (DN 20)	4,2	1½" (DN 40)	17,3
1" (DN 25)	6,2	2" (DN 50)	28,9

Pres

ASTM A105

P Bar



MATERIAL

- A 105
- A 182 F316L

P Bar

